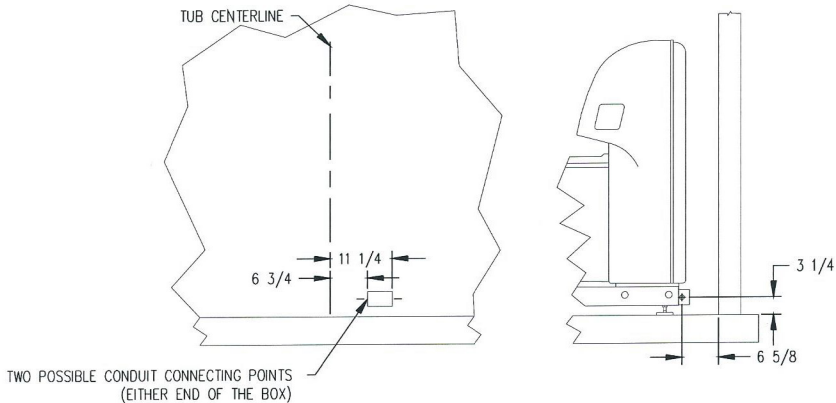


DRAIN AND WATER SUPPLY ROUGH-IN

TUB IS EQUIPPED WITH A FLEXIBLE DRAIN TUBE WITH
A CUFF THAT FITS OVER A 1 1/2" DIAMETER DRAIN PIPE. (HOSE CLAMP FOR CUFF IS SUPPLIED)
DRAIN REQUIREMENT:
MINIMUM OF 1 1/2" (NOMINAL) PVC TUBE WITH SLIP ADAPTER FOR 1 1/2" DIAMETER EXTENSION TUBE.
THE EXTENSION TUBE TO BE EXPOSED AT MINIMUM 1 1/2" FOR CUFF ATTACHMENT.



ELECTRICAL CONNECTING POINTS

ELECTRICAL CONDUIT CONNECTING POINTS
IT IS RECOMMENDED THAT THE TUB BE CONNECTED VIA FLEXIBLE CONDUIT
TO ALLOW FOR SOME MOVEMENT OF THE TUB FOR SERVICE.